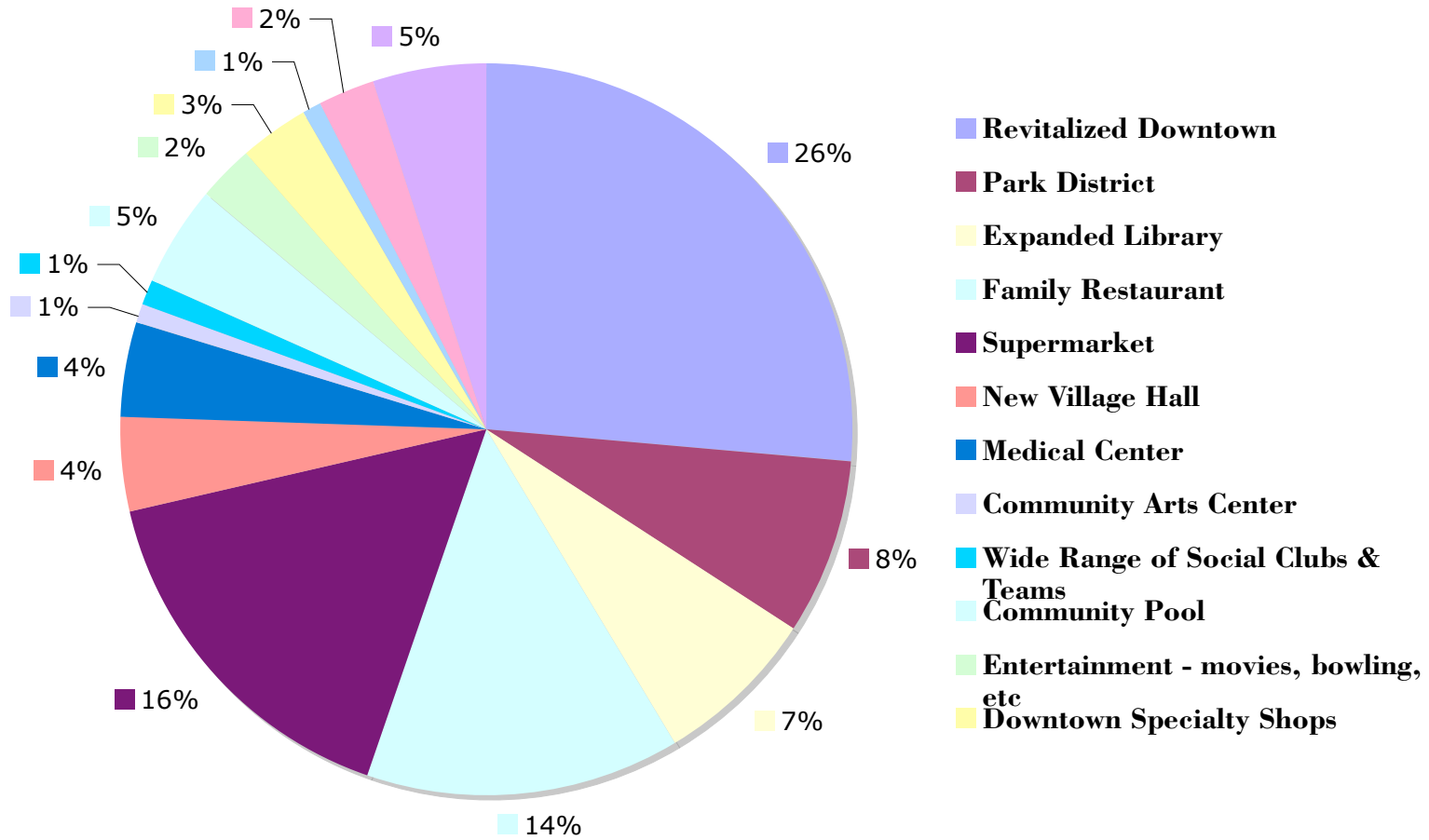
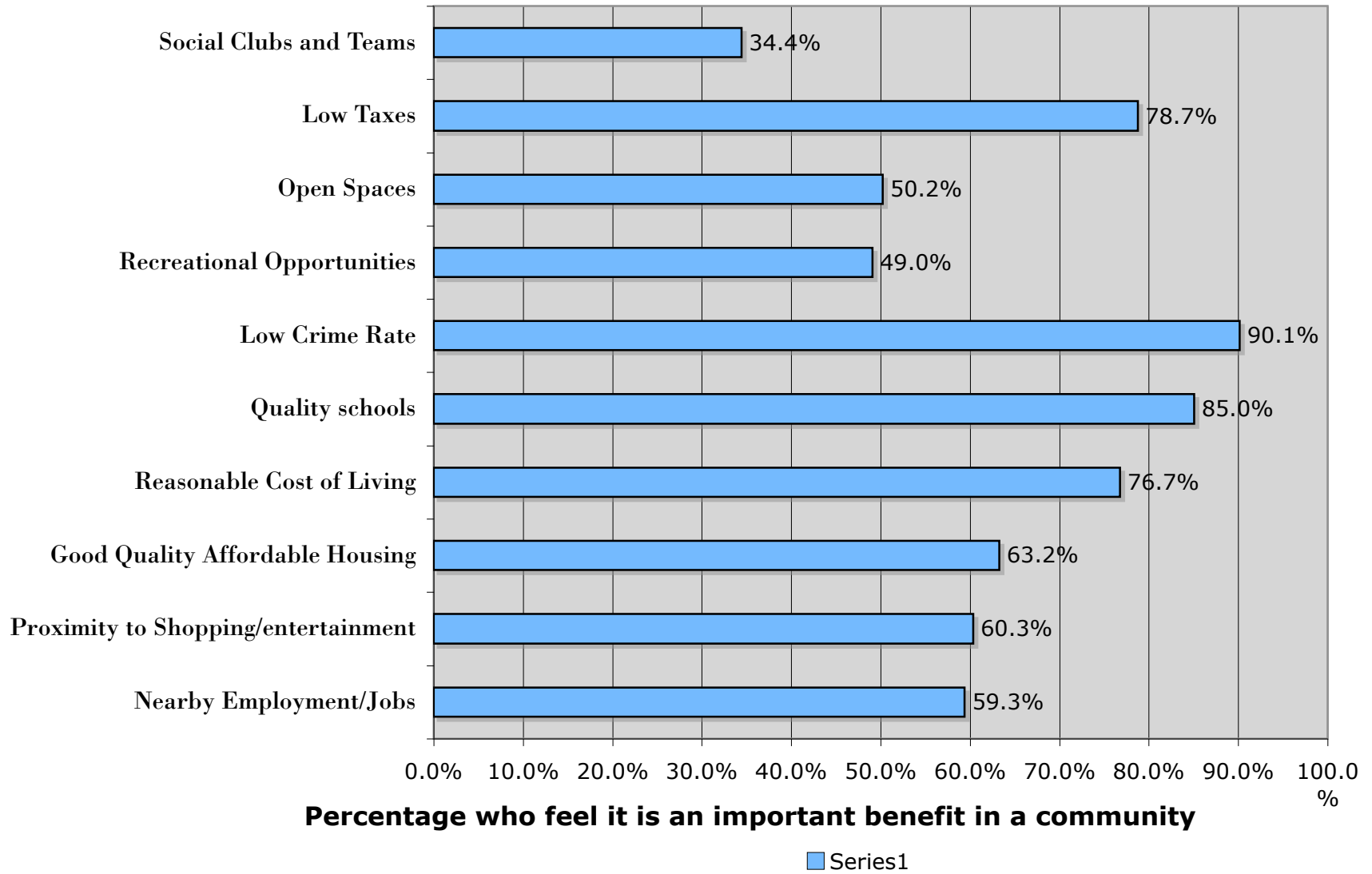


Waterman Residents' Prioritized Improvements

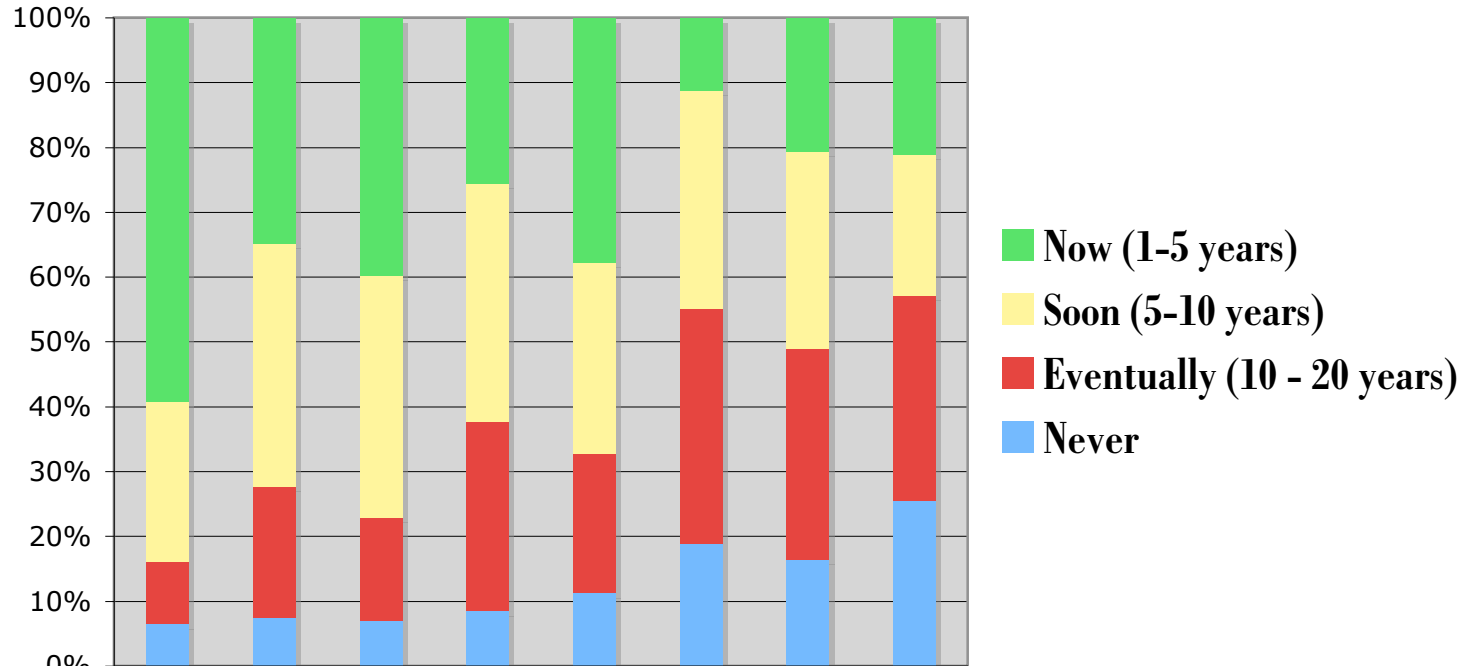


Waterman Residents' Values and Preferences



Rate of Growth and Preferences for Community Improvements

Waterman Town Residents

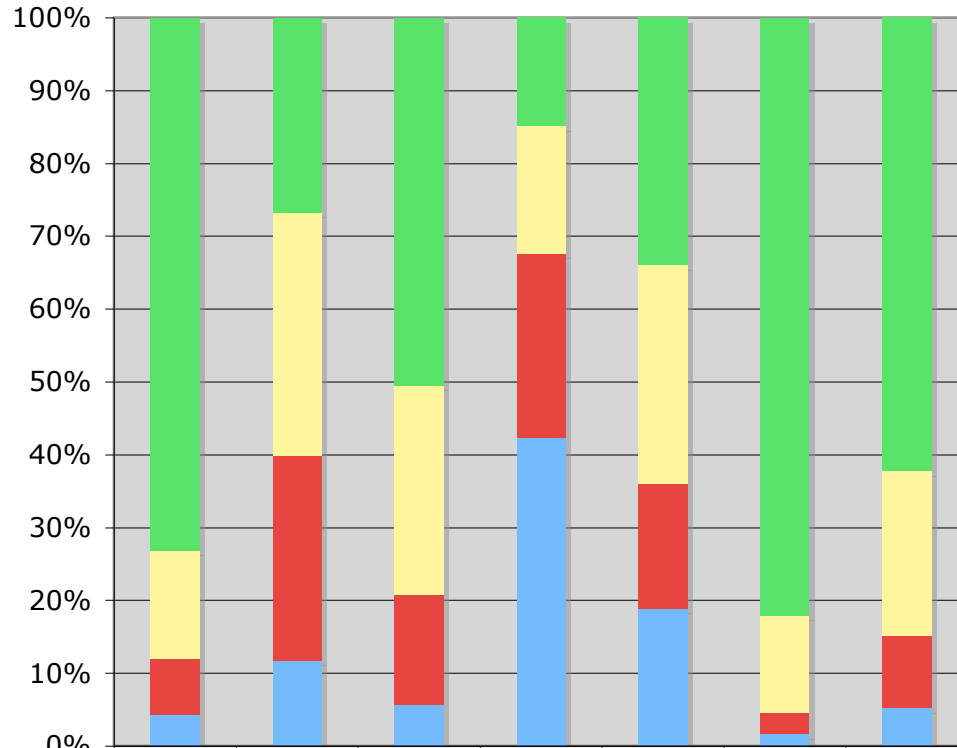


	Revital ize Downto	Park District	Expand ed Library	New Village Hall	Medica l Center	Communi ty Arts	Wide Range of	Communi ty Swimm
Now (1-5 years)	58.9%	34.7%	39.5%	25.4%	37.5%	11.1%	20.6%	21.0%
Soon (5-10 years)	24.7%	37.5%	37.2%	36.6%	29.5%	33.7%	30.4%	21.9%
Eventually (10 - 20 years)	9.5%	20.4%	15.8%	29.0%	21.4%	36.1%	32.5%	31.7%
Never	6.5%	7.4%	7.0%	8.5%	11.2%	18.8%	16.5%	25.4%

Percentage of Residents Who Want Community Improvements

Rate of Growth and Preferences for Waterman Retail

Waterman Town Preferences

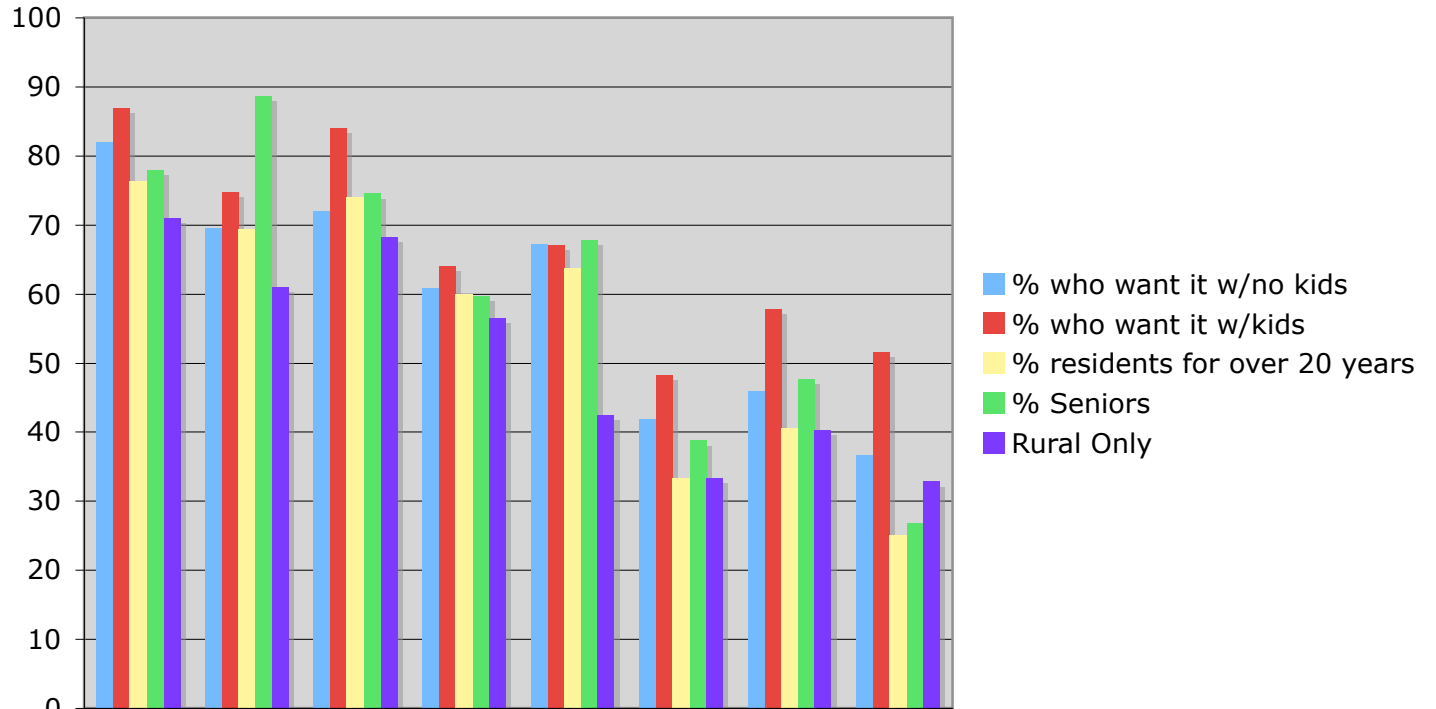


- Now (1-5 years)
- Soon (5-10 years)
- Eventually (10 - 20 years)
- Never

	Supermarket	Entertainment - movie,	Downtown Specialt	Big Box Stores like	Fast Food Chain	Family Restaurant	Drug Store/Pharmacy
■ Now (1-5 years)	73.1%	26.5%	50.4%	14.8%	33.9%	82.1%	62.2%
■ Soon (5-10 years)	15.0%	33.2%	28.7%	17.5%	30.0%	13.3%	22.6%
■ Eventually (10 - 20 years)	7.7%	27.8%	15.2%	25.3%	17.2%	2.9%	10.0%
■ Never	4.3%	11.7%	5.7%	42.4%	18.9%	1.7%	5.2%

Rate of Growth and Preferences for Community Improvements

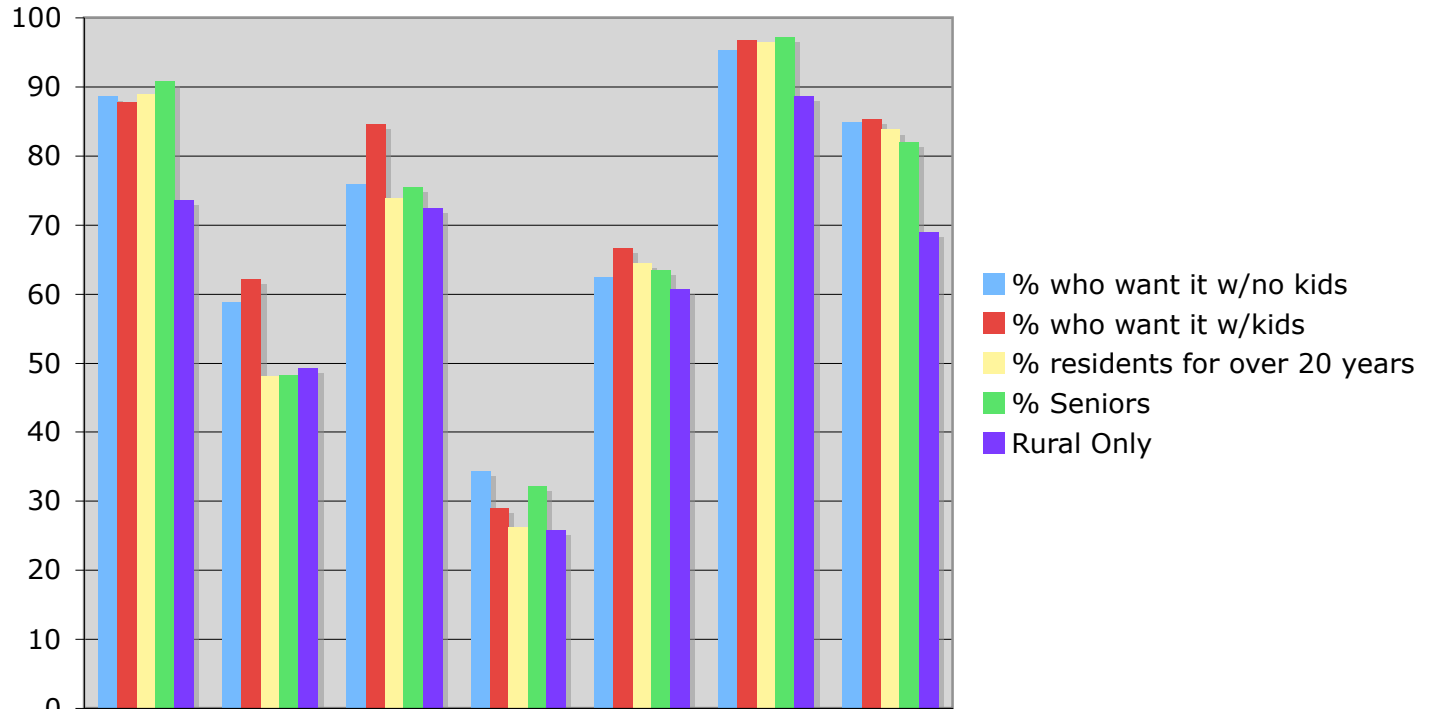
Percentage who want it now(1-5 years) or soon (5-10 years)



	revitalize downtown	park district	expanded library	new village hall	medical center	community arts	wide range of	community swimming
■ % who want it w/no kids	81.884	69.531	72	60.902	67.164	41.88	45.872	36.641
■ % who want it w/kids	86.813	74.713	84.091	64.045	67.045	48.315	57.831	51.648
■ % residents for over 20 years	76.316	69.388	73.958	60	63.725	33.333	40.476	25
■ % Seniors	77.966	88.679	74.51	59.649	67.797	38.776	47.619	26.786
■ Rural Only	71.014	60.938	68.254	56.522	42.424	33.333	40.351	32.836

Percentage who want it now(1-5 years) or soon (5-10 years)

Rate of Growth and Preferences for Retail Improvements



	supermarket	entertainment - movie,	downtown specialt	big box' stores like	fast food chain	family restaurant	drug store/pharmacy
% who want it w/no kids	88.7324	58.7786	75.9124	34.3066	62.4113	95.2381	84.8921
% who want it w/kids	87.7778	62.2222	84.6154	28.8889	66.6667	96.7033	85.3933
% residents for over 20 years	88.8889	48	73.8318	26.2136	64.486	96.4912	83.8095
% Seniors	90.8413	48.1481	75.4098	32.2034	63.4921	97.1014	82
Rural Only	73.6111	49.2308	72.4638	25.7576	60.7143	88.7324	68.9189